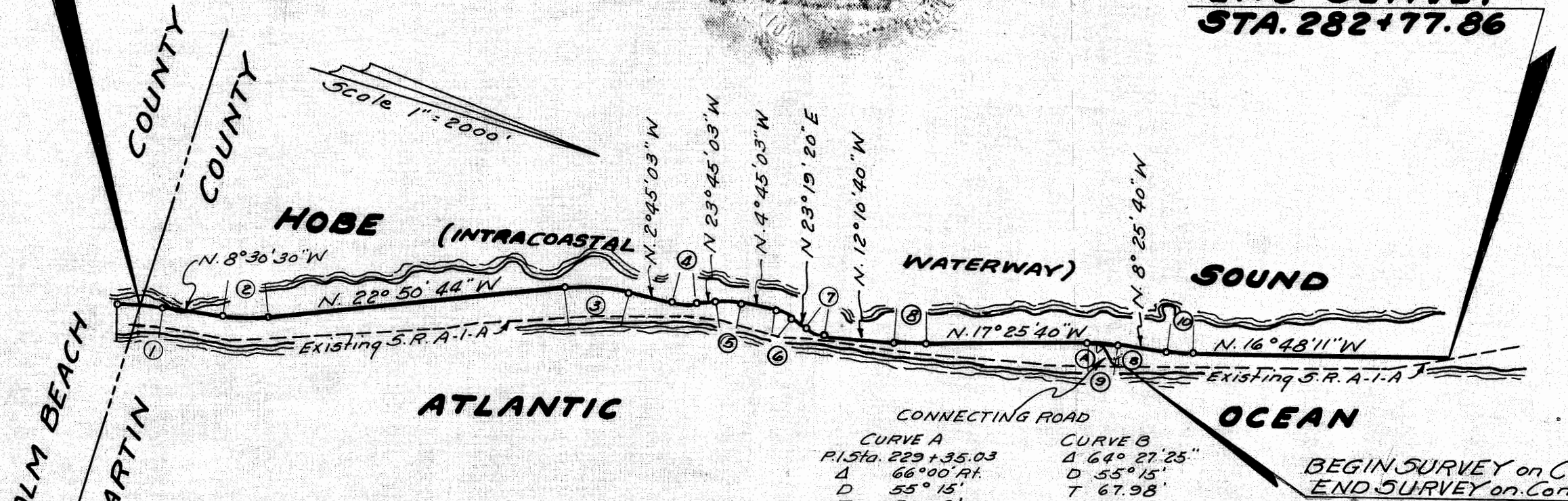


**BEGIN SURVEY
STA 80+11±**

**END SURVEY
STA. 282+77.86**



① P.I. Sta. 80+11.14 Δ 7°15' Rt. D 1°00' T 362.95' L 725.00' P.C. Sta. 76+48.15 P.T. Sta. 83+73.15	② P.I. Sta. 96+47.12 Δ 14°20'41" Lt. D 2°00' T 360.52' L 717.24' P.C. Sta. 92+86.60 P.T. Sta. 100+03.84	③ P.I. Sta. 150+68.93 Δ 20°05'41" Rt. D 5°00' T 507.61' L 1004.74' P.C. Sta. 145+61.32 P.T. Sta. 155+66.06	④ P.I. Sta. 164+23.45 Δ 21°00' Lt. D 5°00' T 212.45' L 420.00' P.C. Sta. 162+11.00 P.T. Sta. 166+31.00	⑤ P.I. Sta. 170+98.55 Δ 12°00' Rt. D 5°00' T 191.82' L 380.00' P.C. Sta. 169+06.73 P.T. Sta. 172+86.73	⑥ P.I. Sta. 179+62.35 Δ 28°04'23" Rt. D 10°00' T 143.42' L 280.73' P.C. Sta. 178+18.93 P.T. Sta. 180+93.66
---	--	---	---	---	---

CURVE A P.I. Sta. 229+35.03 Δ 66°00' Rt. D 55°15' T 70.03' Arc L 124.21' P.C. Sta. 228+65.0 P.T. Sta. 229+89.21	CURVE B Δ 64°27'25" D 55°15' T 67.98' Arc L 121.31' P.C. Sta. 232+58.70 P.T. Sta. 233+80.01
---	--

Bearing on Connecting Road: N 48° 34' 20" E

⑦ P.I. Sta. 185+46.24 Δ 35°30' Lt. D 10°00' T 183.64' L 355.00' P.C. Sta. 183+62.60 P.T. Sta. 187+17.60	⑧ P.I. Sta. 200+43.96 Δ 5°15' Lt. D 1°00' T 262.68' L 525.00' P.C. Sta. 197+81.28 P.T. Sta. 203+06.28
--	--

⑨ P.I. Sta. 229+74.54 Δ 2°00' Rt. D 2°00' T 225.47' L 450.00' P.C. Sta. 227+49.07 P.T. Sta. 231+93.07	⑩ P.I. Sta. 241+51.88 Δ 8°22'31" Lt. D 2°00' T 209.76' L 418.76' P.C. Sta. 239+42.12 P.T. Sta. 243+60.88
--	---

We, Richard H. Simpson, as Chairman of the State Road Department of the State of Florida, and R. M. Hartsfield as Secretary of the State Road Department of the State of Florida, do hereby certify that this map is the Official Map of Location and Survey of a portion of Section 8903, designated as a part of State Road 707 in Martin County, Florida. Said portion of Section 8903 extending from Palm Beach County Line Northwesterly on Jupiter Island 3.84 miles more or less to intersection with State Road A-1-A and Connecting Road.
Prepared and adopted by the State Road Department of the State of Florida under provisions of Section 341.41, Florida Statutes of 1941.

Richard H. Simpson
Chairman State Road Department

R. M. Hartsfield
Secretary State Road Department

J. D. Dumbell
State Highway Engineer

Filed for Record in the Office of the Clerk of the Circuit Court for the County of Martin, State of Florida in Map Book 2 Page 103 on the 11th day of January A. D. 1954.

Dated: June 29, 1953

Dorothy Pierce
Clerk of Circuit Court
Martin County, Florida